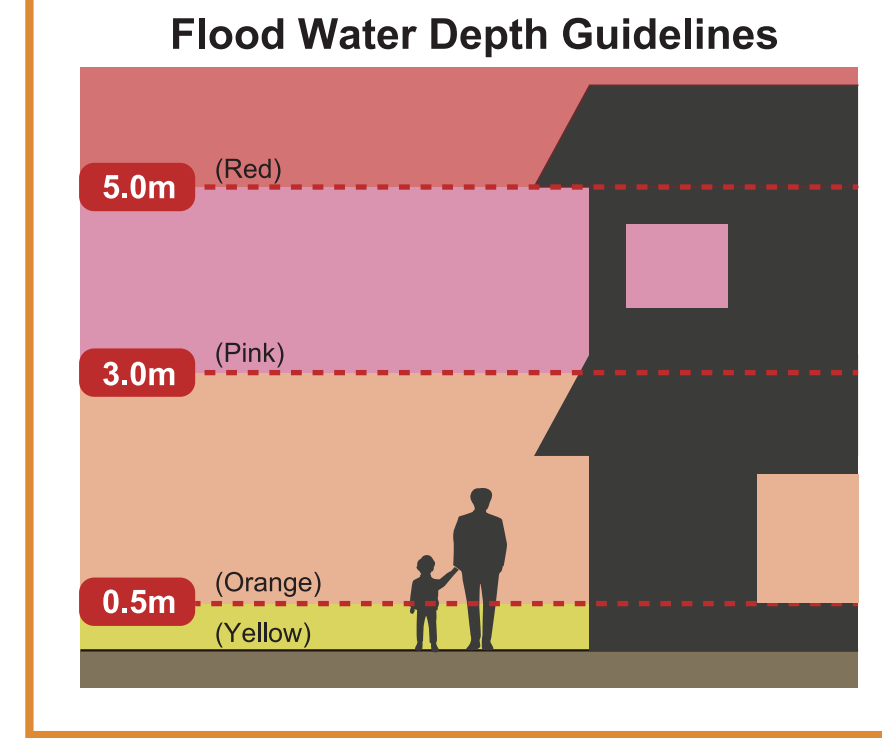
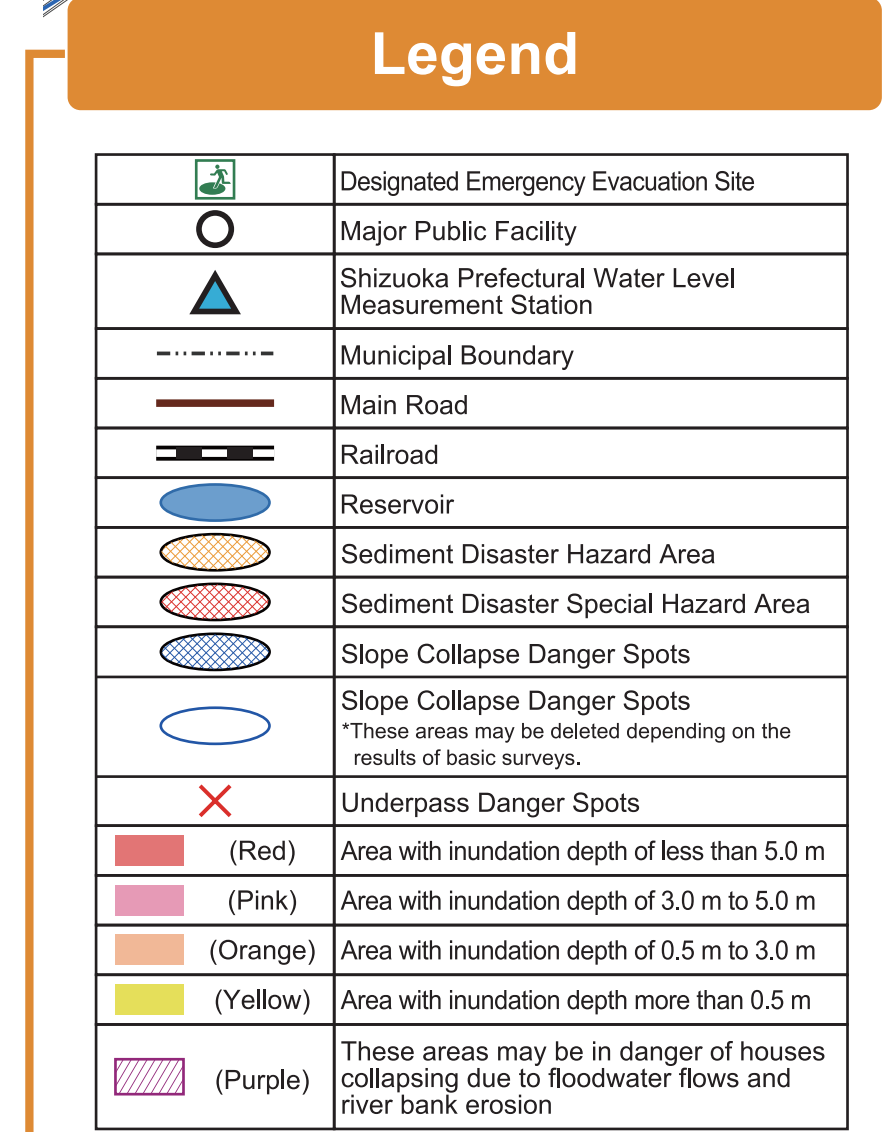
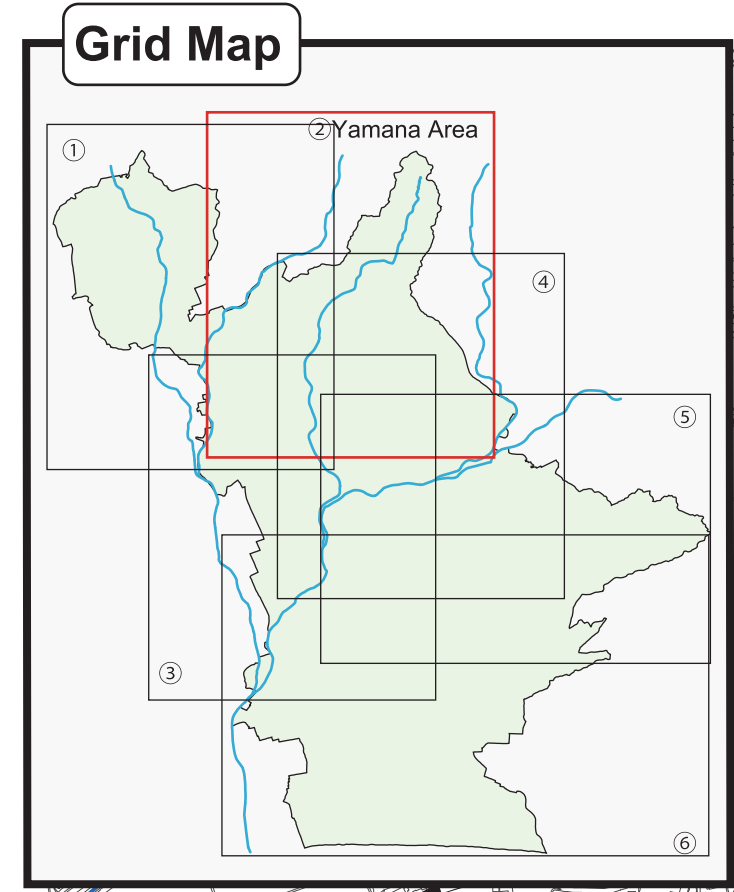


# Fukuroi City Flood Hazard Map

## [Area Map]

### [(2) Yamana Area]



\*This Flood Hazard Map shows areas expected to be inundated, as well as estimated water depth, sediment disaster hazard areas, and designated emergency evacuation sites in the event that they are inundated, when levees are broken or overflow on the Ota River System, including the **Ota River, Haranoya River, Shikiji River, Ugari River, or Saka River**, due to rainfall at the maximum level expected for the Ota River Basin (629.5 mm of rainfall in 24 hours).  
\*This map shows water depth due to flooding of target rivers in estimated rainfall conditions, so there is the possibility of flooding outside of the inundation estimation areas shown on the map.

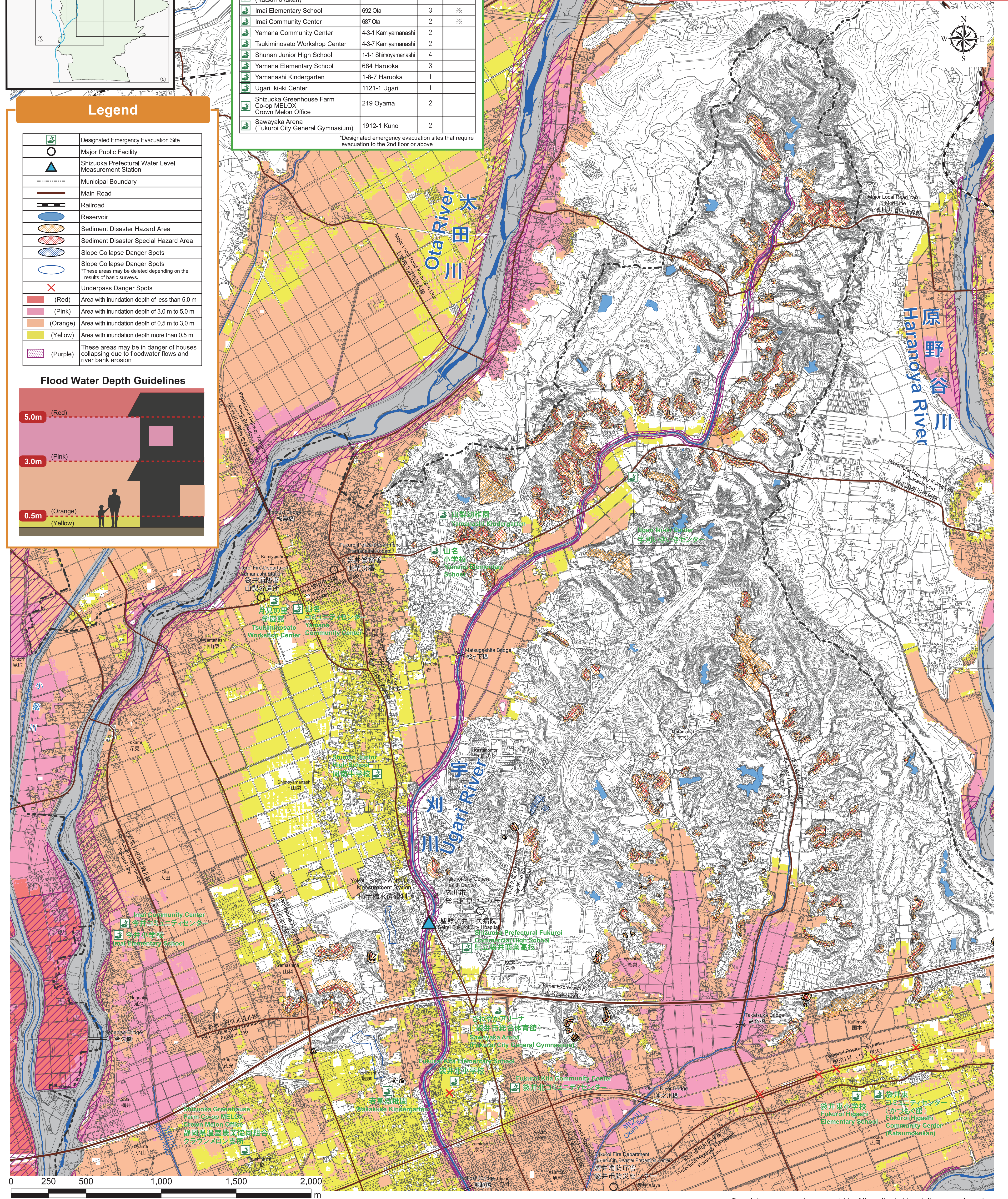
Designated Emergency Evacuation Sites (Flooding)			
Designated Emergency Evacuation Site	Address	Floors	Comments
Fukuroi Kita Elementary School	1580 Kuno	3	
Fukuroi Kita Community Center	1330-2 Kuno	2	※
Shizuoka Prefectural Fukuroi Commercial High School	2350 Kuno	4	
Wakakusa Kindergarten	766-1 Horikoshi	2	
Fukuroi Higashi Elementary School	2317-1 Hirooka	3	
Fukuroi Higashi Community Center (Katsumokukan)	2506-1 Hirooka	2	
Imai Elementary School	692 Ota	3	※
Imai Community Center	687 Ota	2	※
Yamana Community Center	4-3-1 Kamiyamanashi	2	
Tsukiminosato Workshop Center	4-3-7 Kamiyamanashi	2	
Shunan Junior High School	1-1-1 Shimoyamanashi	4	
Yamana Elementary School	684 Haruoka	3	
Yamanashi Kindergarten	1-8-7 Haruoka	1	
Ugari Iki-ki Center	1121-1 Ugari	1	
Shizuoka Greenhouse Farm Co-op MELOX Crown Melon Office	219 Oyama	2	
Sawayaka Arena (Fukuroi City General Gymnasium)	1912-1 Kuno	2	

\*Designated emergency evacuation sites that require evacuation to the 2nd floor or above

**Areas that require early eviction evacuation**

These areas are not suitable for seeking safety indoors, so residents must evacuate to a safe place.

These areas are in danger of houses collapsing due to floodwaters or river-bank erosion (Purple)	These areas are expected to have wooden houses collapse due to strong water flows caused by levees breaking, and levees and the ground will be eroded by strong flows from the river.	Flood Waters River Bank Erosion
These areas are expected to flood 3 meters or deeper. (Red) (Pink)	These areas are expected to have flooding up to or above the second floor of typical homes	3 m or deeper
These areas are expected to experience flooding for 3 consecutive days or longer	These areas are expected to experience flooding 50 cm or deeper for 3 consecutive days or longer, stranding people (Not shown on this map. See the guide-book for range.)	50 cm or deeper



\*Inundation may occur in areas outside of the estimated inundation areas shown here.