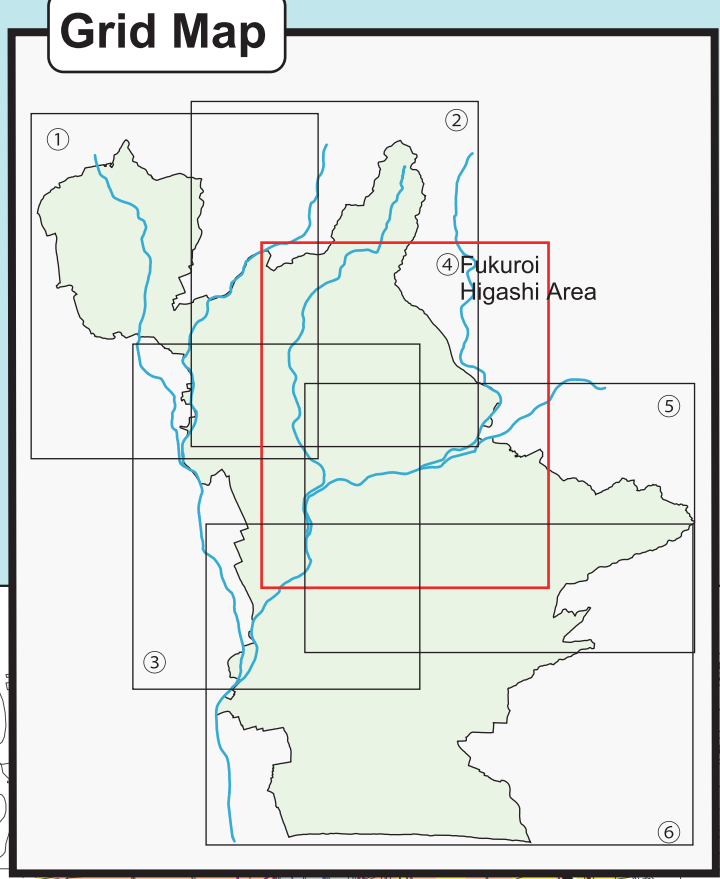


Fukuroi City Flood Hazard Map

[Area Map]

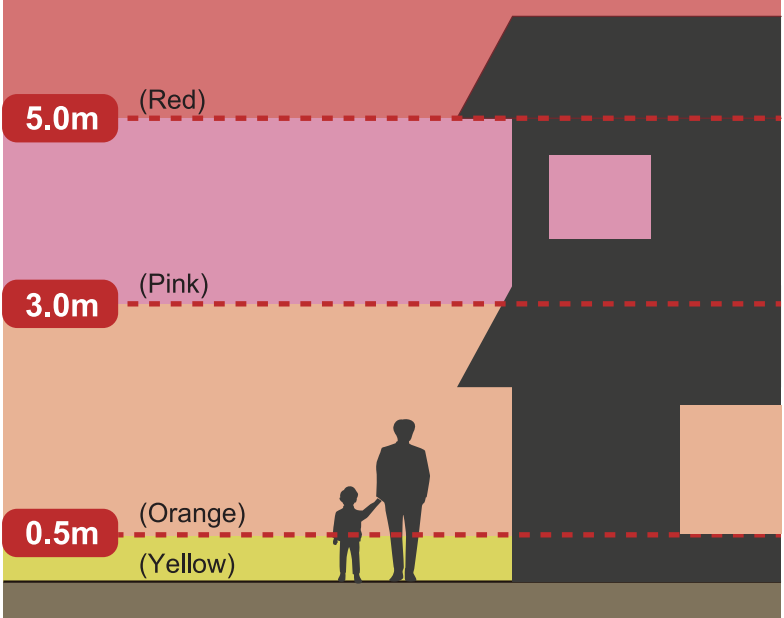
[(4) Fukuroi Higashi Area]

This Flood Hazard Map shows areas expected to be inundated, as well as estimated water depth, sediment disaster hazard areas, and designated emergency evacuation sites in the event that they are inundated, when levees are broken or overflow on the Ota River System, including the Ota River, Haranoya River, Shikiji River, Ugari River, or Saka River, due to rainfall at the maximum level expected for the Ota River Basin (629.5 mm of rainfall in 24 hours).
This map shows water depth due to flooding of target rivers in estimated rainfall conditions, so there is the possibility of flooding outside of the inundation estimation areas shown on the map.



Legend	
	Designated Emergency Evacuation Site
	Major Public Facility
	Shizuoka Prefectural Water Level Measurement Station
	Municipal Boundary
	Main Road
	Railroad
	Reservoir
	Sediment Disaster Hazard Area
	Sediment Disaster Special Hazard Area
	Slope Collapse Danger Spots
	Slope Collapse Danger Spots *These areas may be deleted depending on the results of basic surveys.
	Underpass Danger Spots
	(Red) Area with inundation depth of less than 5.0 m
	(Pink) Area with inundation depth of 3.0 m to 5.0 m
	(Orange) Area with inundation depth of 0.5 m to 3.0 m
	(Yellow) Area with inundation depth more than 0.5 m
	(Purple) These areas may be in danger of houses collapsing due to floodwater flows and river bank erosion

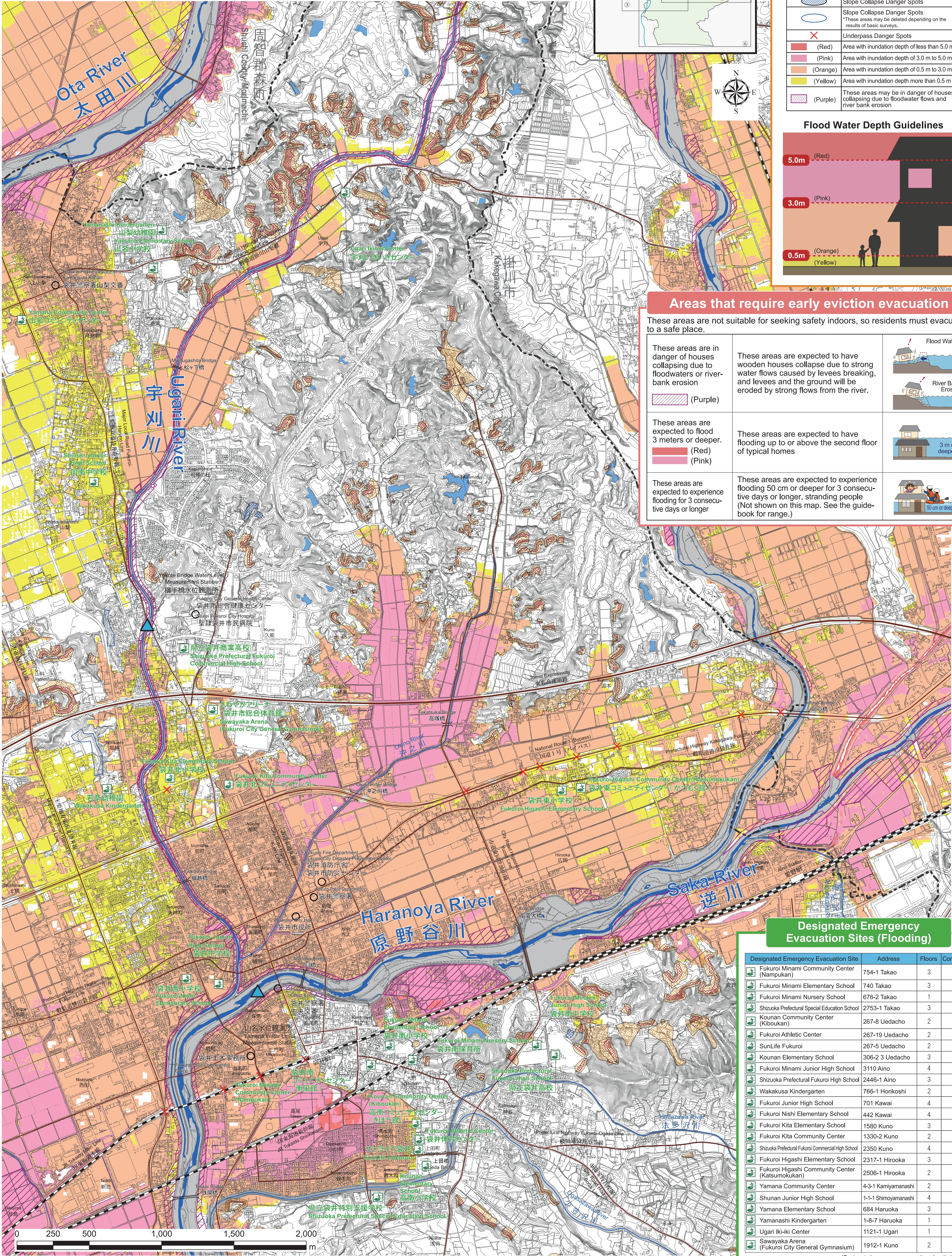
Flood Water Depth Guidelines



Areas that require early eviction evacuation

These areas are not suitable for seeking safety indoors, so residents must evacuate to a safe place.

<p>These areas are in danger of houses collapsing due to floodwaters or river-bank erosion</p>	<p>These areas are expected to have wooden houses collapse due to strong water flows caused by levees breaking, and levees and the ground will be eroded by strong flows from the river.</p>
<p>These areas are expected to flood 3 meters or deeper.</p>	<p>These areas are expected to have flooding up to or above the second floor of typical homes</p>
<p>These areas are expected to experience flooding for 3 consecutive days or longer</p>	<p>These areas are expected to experience flooding 50 cm or deeper for 3 consecutive days or longer, stranding people (Not shown on this map. See the guide-book for range.)</p>



Designated Emergency Evacuation Sites (Flooding)

Designated Emergency Evacuation Site	Address	Floors	Comments
Fukuroi Minami Community Center (Nampukan)	754-1 Takao	3	
Fukuroi Minami Elementary School	740 Takao	3	
Fukuroi Minami Nursery School	676-2 Takao	1	
Shizuoka Prefectural Special Education School (Kiboukan)	2753-1 Takao	3	
Koukan Community Center (Kiboukan)	267-8 Uedacho	2	
Fukuroi Athletic Center	267-19 Uedacho	2	
SunLife Fukuroi	267-5 Uedacho	2	
Koukan Elementary School	306-2 3 Uedacho	3	
Fukuroi Minami Junior High School	3110 Aino	4	
Shizuoka Prefectural Fukuroi High School	2446-1 Aino	3	
Wakakusa Kindergarten	766-1 Horikoshi	2	
Fukuroi Junior High School	701 Kawai	4	※
Fukuroi Nishi Elementary School	442 Kawai	4	※
Fukuroi Kita Elementary School	1580 Kuno	3	
Fukuroi Kita Community Center	1330-2 Kuno	2	※
Shizuoka Prefectural Fukuroi Commercial High School	2350 Kuno	4	
Fukuroi Higashi Elementary School	2317-1 Hirooka	3	
Fukuroi Higashi Community Center (Katsumokukan)	2506-1 Hirooka	2	
Yamana Community Center	4-3-1 Kamiyamanashi	2	
Shunan Junior High School	1-1-1 Shimoyamanashi	4	
Yamana Elementary School	684 Haruoka	3	
Yamanashi Kindergarten	1-8-7 Haruoka	1	
Ugari Iki-iki Center	1121-1 Ugari	1	
Sawayaka Arena (Fukuroi City General Gymnasium)	1912-1 Kuno	2	

*Inundation may occur in areas outside of the estimated inundation areas shown here.

Permission was obtained from the Director General of the Geospatial Information Authority of Japan (GSI) to use base maps issued by the GSI for the purpose of making this map. (Permission # 2018 Joshi, No. 1654)