

## Major seasonal events held at Enshu Sanzan



Kasuisai Temple: Hinamatsuri: 1/1 - 3/31



Hattasan Temple: Mantosai/Hozuki Market: 7/9 - 7/10



Yusanji: Autumn Foliage Tours: Late November - Early December

**Inquiries: Fukuroi City Tourism Association**  
 〒437-00231211-1 Takao, Fukuroi-shi, Shizuoka  
 TEL.(0538)43-1006 / FAX.(0538)44-3189  
 E-mail : info@fukuroi-kankou.jp  
<http://www.fukuroi-kankou.jp>

## Kasuisai Temple

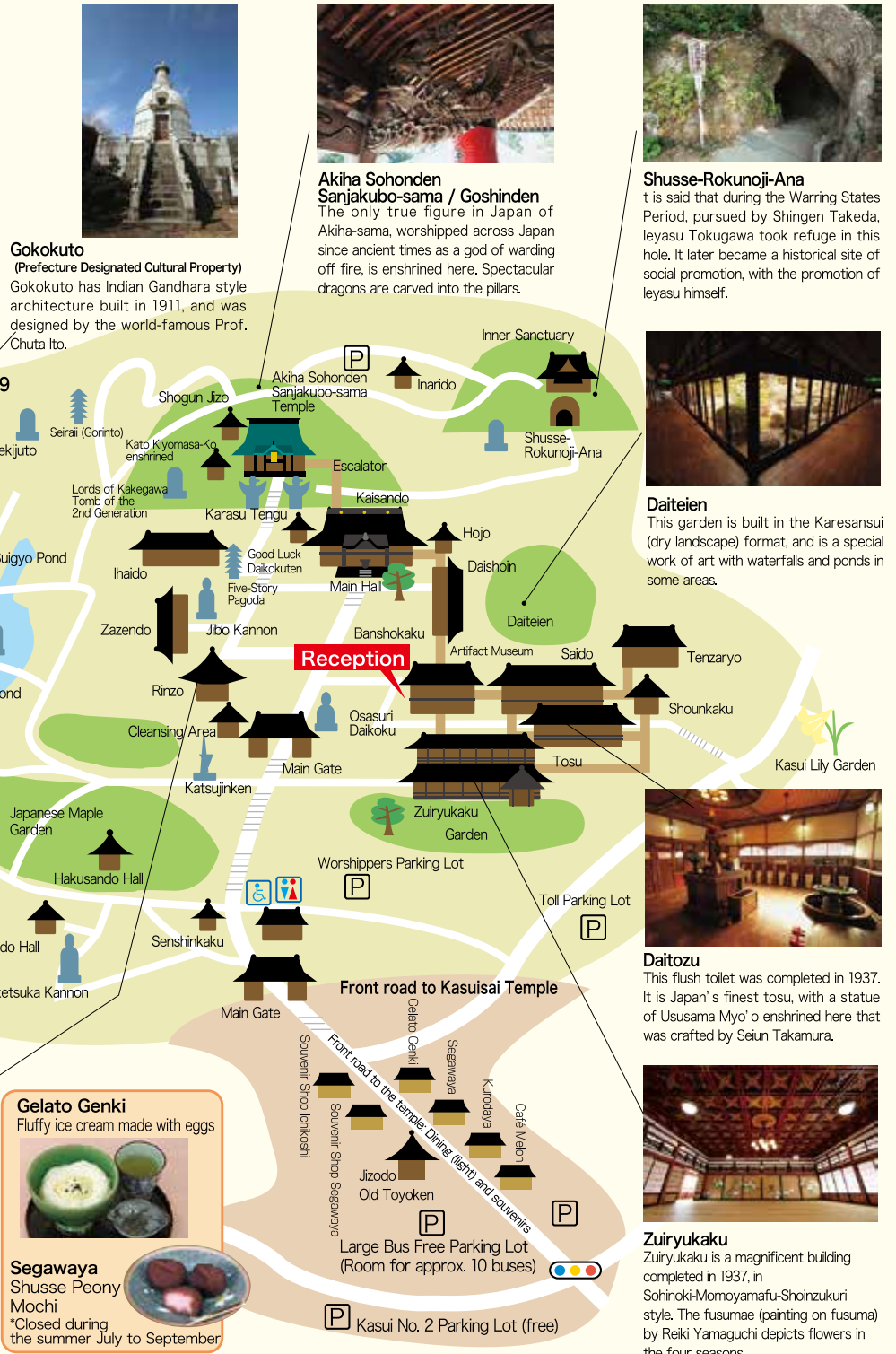
Akiha Sohonden, Kasuisai Temple (Soto Buddhism)  
 This is one of the most famous Soto temples, with 600 years of history and traditions as a Zen temple. It is known as a major dojo for Zen in the Tokaido region, and as Japan's only main temple to ward against fire and the Akiha faith.

2915-1 Kuno, Fukuroi-shi, Shizuoka 437-0061  
 TEL: (0538) 41-2121 (Rep.) / Fax: (0538) 42-1429  
<http://www.kasuisai.or.jp>

**The story of Kasuisai Temple and Ieyasu Tokugawa**  
 "The chief priest looks upon me as if I was his own child. So he falls asleep here. I rejoice in this intimacy, and the priest should sleep well."

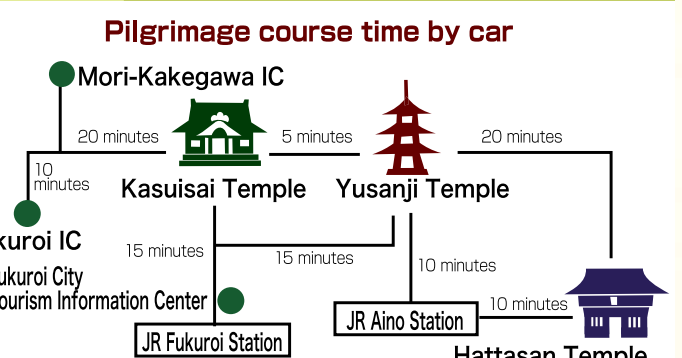
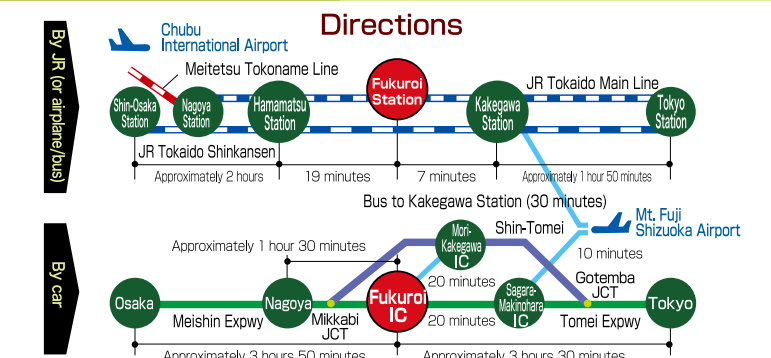
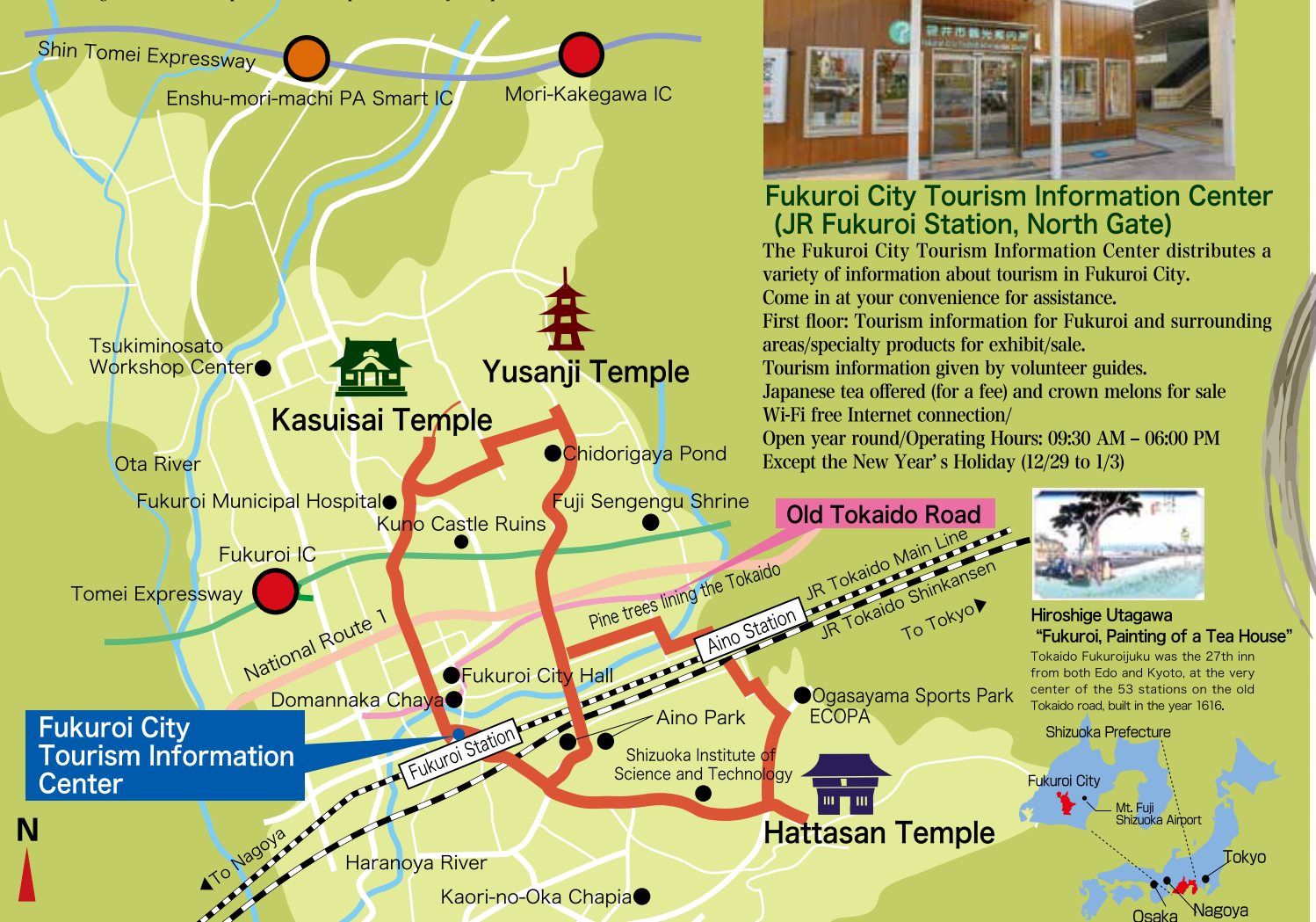
**Peony Garden**  
 From early April to early May, this garden is colored by 2,000 peonies of 60 different species.

**Rinzo**  
 It is said that turning this rinzo (rotating shelf for sutras) one time brings the same divine grace as reading issaikyo (the complete Buddhist scriptures). It grants divine grace for academic achievement.



## Fukuroi, Enshu Sanzan, A Journey Of Self-Pilgrimage, Guide Map

"Enshu Sanzan" refers to three ancient temples in Fukuroi, Shizuoka Prefecture, in the center of the Tokaido Region: Hattasan Temple, Kasuisai Temple, and Yusanji Temple.



## Fukuroi City Enshu Sanzan



A journey of self-pilgrimage  
 Enshu Sanzan boasts a history over one thousand years and is a place to pray for health of mind and body, and protection from disasters.  
 By walking the temple grounds that reflect colors of the season, getting in touch with historic culture built by the ancients, and learning of both their kindness and harshness, you can receive divine grace, newly discover parts of yourself you had forgotten, and even parts you had never noticed before.  
 By seeking these ancient temples yourself, you may encounter yourself.

Fukuroi Tourism Association



# Me-no-Reizan Yusanji Temple

lozan, Yusanji Temple (Shingon Sect of Buddhism) This ancient temple of Shingon Buddhism has many cultural properties on its wide grounds, including national designated important cultural properties such as its main gate and three-story pagoda. It fills with visitors in the season of autumn leaves.

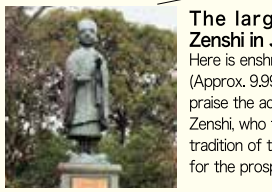
〒437-0011  
1 Muramatsu, Fukuroi-shi, Shizuoka  
TEL : (0538) 42-3633 FAX : 42-4223  
<http://www2.wbs.ne.jp/~yusanji/>



**Ruri Falls**  
It is said that long ago, when Emperor Koken suffered from an eye disease, prayers were made to Yakushi Nyorai enshrined in Yusanji Temple, and the water of these falls was blessed, so that when the emperor washed his eyes in this holy water, his eye disease was fully cured.



**Natural woods and sand (approach road) of Tengudani**  
Come to pray here while resting your mind in the tranquility of natural forest left in its ancient form, and listening to the sounds of songbirds and the babbling of the valley stream.



**The largest statue Eisai Zenshi in Japan**  
Here is enshrined a massive 33 shaku (Approx. 9,999 m or nearly 10 m) to praise the achievements of Eisai Zenshi, who first brought the tradition of tea to Japan, and to pray for the prosperity of the tea industry.



**Hondo-nai Yakushi Nyorai Zushi**  
(National designated important cultural property)  
**Hondo**  
(Prefecture designated cultural property)  
The "kyuden zushi" that shines gold at the front inside the main hall is a work of the Muromachi Period, donated by Yoshimoto Imagawa. Yakushi Nyorai is enshrined within.



**Three-story Pagoda**  
(National designated important cultural property)  
This a truly venerable pagoda, having been constructed by Minamoto no Yoritomo in 1190 as a sign of gratitude for curing eye disease.



**Hoshoden Visit Divine Grace Tour**  
Visitors can enjoy "kaidanmeguri" around the fuduson, the four heavenly kings, and the thirteen buddhas in the hoshoden, hojo, and shoin on the grounds of the temple, and view paintings and writings by Kawamura Kizan. (For a fee)



**The world's largest Ojuzu (120 m)**  
This a great rosary 120 m in length, hung upon the ranma that stretches from the Hoshoden to the Hojo.

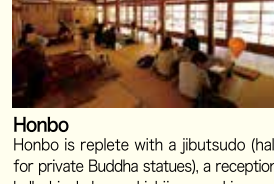


**Shoin**  
(Prefecture designated cultural property)  
Built in 1699. Originally located in the former Enshu Yokosuka Castle grounds, it was donated to this temple in 1859 by the clan leader Nishio Okinokami.

# Yakuyoke Kannon Hattasan Temple

Hattasan Temple, Soneiji Temple (Shingon Sect of Buddhism) It is said that this temple was started in the Nara Period, when Gyoki Jonin enshrined Shokanzeon Bosatsu here, following the "chokumei" of Emperor Shomu. It is known as a venerable Yakuyoke Kannon, drawing many visitors who crowd into the temple for the first visit to a temple in the New Year.faiht.

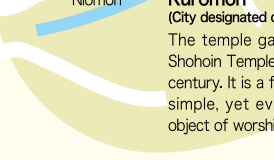
〒437-0032  
2777 Toyosawa, Fukuroi-shi, Shizuoka  
TEL : (0538)43-3601 / FAX : 42-8630  
<http://www.hattasan.or.jp>



**Honbo**  
Honbo is replete with a jibutsudo (hall for private Buddha statues), a reception hall, shiunkaku, and ichjoan, and is used as a venue for religious ceremonies such as sermons, and as a hall for entertaining guests at pilgrimages.



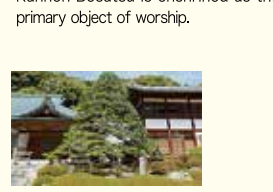
**Niomon**  
(National designated important cultural property)  
Niomon is a majestic triple-bay single-door tower gate, bearing a mark of Momoyama Period traditions. On the left and right sides stand "Kongo Rikishi-zo" (statues of fierce guardian gods) which emanate strength.



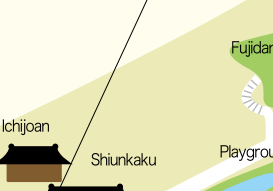
**Kuromon**  
(City designated cultural property)  
The temple gate of Kyu Tacchujin Shohoin Temple, built in the early 18th century. It is a four-legged gate, made simple, yet ever so quaint, primary object of worship.



**Hattasan Temple Main Hall**  
This "daigaran" which remained in the legends of the temple has been reproduced to its former glory gathering the "iki" of contemporary architectural techniques. That form represents a phoenix with its wings spread, and a small Yakuyoke Kannon Bosatsu is enshrined as the primary object of worship.



**Pines planted by Ieyasu Tokugawa**  
These splendid pine trees with wide spread branches are said to have been planted by Ieyasu Tokugawa himself in front of the Honbo.



**Ichjoan**  
Visitors can come to worship while listening to the babbling of Hattazawa River that reflects the four seasons as they walk along the granite steps and hundred year old stand of cedar trees that run from Niomon to the Main Hall.



**Sando**  
Visitors can come to worship while listening to the babbling of Hattazawa River that reflects the four seasons as they walk along the granite steps and hundred year old stand of cedar trees that run from Niomon to the Main Hall.



**The temple road, dining/light dining, and souvenirs**

**Dining Information**  
Fine Dining: Yamadaya Fukurojuku Tamago Fuwafuwa

**Hattasan Specialty: "Yakuyoke Dango"**

## Enshu Sanzan Buddhist Training Experience

### Hattasan Temple Copying Sutra Meets

"Shakyo no Kai" (Copying sutra meets) is held every month. Try your hand at the discipline of copying sutras by hand in the quiet space of the temple grounds, away from the hustle and bustle.

- When: 3rd Sundays and festival days of each month
- Where: Hattasan Temple Main Hall (except January, February)

Copying sutras

## Kasuisai Temple Sit, Write, and Eat Meets

Kasuisai Temple has prepared Zen meditation sessions that combine seated meditation, copying of sutras, and vegetarian cuisine into one set. How to sit and breathe properly will be carefully explained from the basics, so beginners and female guests can participate at ease.

Seated Zen meditation

Buddhist vegetarian cuisine

## Yusanji Temple Training Experiences of Mind

Yusanji Temple conducts training experiences that include Buddhist sermons, seated meditation, copying of sutras, tracing of Buddhist images, and waterfall training. Please inquire in advance if you would like to participate. (Reservations required)

Copying sutras

Waterfall training

## Fukuroi City · Enshu Sanzan Dining Guide

### Hattasan Specialty: "Yakuyoke Dango"

Starting with its inclusion as a gift for "Edo tojo" thanks to the proposal of Jishi Hachiemon who lived before the gates of the temple in the time of lesada, 13th shogun of the Tokugawa shogunate (1854), these confections have been popularly referred to as "yakuyoke dango", and are still beloved by the local people today.

## Kasuisai Temple Buddhist Vegetarian Cuisine

This delicious, easy on the body cuisine that incorporates locally grown seasonal ingredients. A menu has been prepared which allows diners to feel the change of the seasons in the flavor, aroma, and appearance of its dishes. Enjoy this low calorie diet that is healthy for the mind and body, made on the principle of "ishoku dogen"

## Fukurojuku Tamago Fuwafuwa (Fukurojuku Fluffy Eggs)

This is a specialty dish of Fukurojuku on the Tokaido road from the Edo Period. There is a record from 1813 in the travel journal of a wealthy merchant from Osaka stating that it was served with breakfast at Otawaki Honjin. The Fukuroi City Tourism Association recreated this dish based on an Edo Period cookbook, as a new specialty product for Fukuroi City. (Served at restaurants in Fukuroi, and shops in front of Hattasan Temple and Kasuisai Temple)