

Evacuation

● When an earthquake occurs:

First...

- ① Lower your stance
- ② Protect your head
- ③ Do not move

Principles of evacuation

When indoors...

- Hide under a desk and protect your head.
- Evacuate calmly, do not rush toward an exit.
- Do not use an elevator when evacuating.

When outdoors...

- Move away from falling objects and buildings which are likely to collapse.
- Do not enter narrow alleyways.

When walking along a road



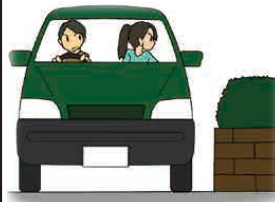
- Protect your head from falling objects such as pieces of window glass from a building or signboards, etc.
- Avoid narrow alleyways and walls.
- Move away from dangerous places such as old buildings or cliffs, etc.
- Evacuate to a nearby sturdy building or plaza, etc.

When at home



- Hide under a sturdy desk, etc.
- Move away from dressers, bookshelves, glass windows, etc.
- Put out fires quickly.
- Open a door to secure an escape route.
- Do not rush outside in a panic.
- Wear slippers, etc., to protect your feet.

When driving an automobile



- Do not make a sudden stop. Decelerate slowly, park in a safe place, and stop the engine.
- Use a radio to obtain information, etc., on the disaster.
- Follow the instructions of police officers, fire department staff or firefighters if they are present.
- When evacuating, leave the key in the ignition and evacuate by foot.

When in a train, or at a station or platform



- Evacuate according to the instructions from the crew or station staff.
- Do not get off the train on your own.
- Be careful of timetables, and fluorescent lights, etc., as they may fall.
- Lower your stance and hold onto pillars, etc., so as not to fall onto the tracks.

When at school:



- Do not rush outside in a panic. Hide under a desk and protect yourself, and follow the instructions from a teacher.
- When in a hallway, on a playground or in a gymnasium, move away from glass windows, lockers, play equipment, etc., and crouch while protecting your head.
- In a case where a flame is being used in a laboratory or home economics room, put out the flame immediately and hide under a desk.

When you are near the coast or an estuary



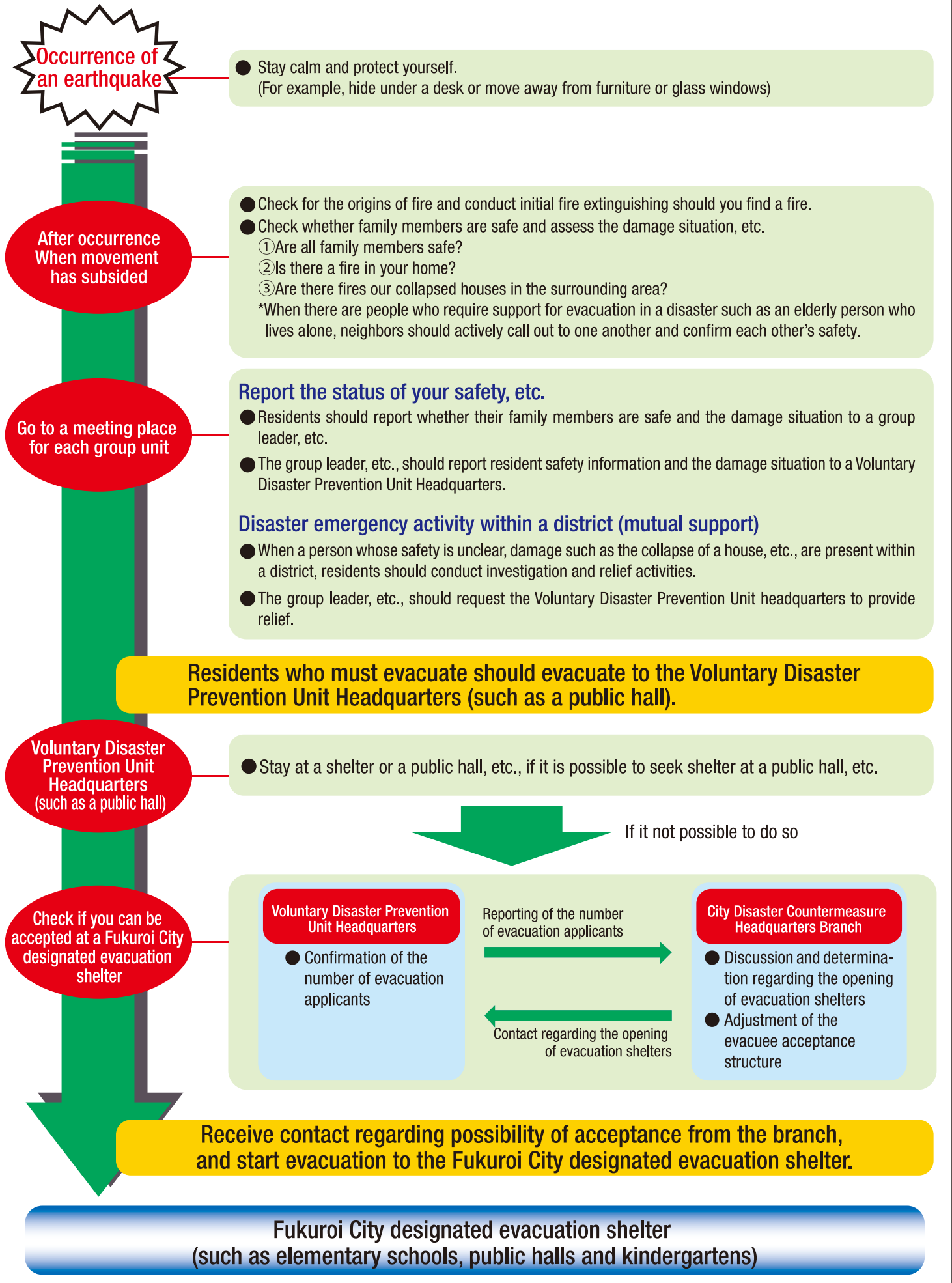
- Since there is a risk of a tsunami, evacuate to a nearby tsunami evacuation building or a tsunami temporary evacuation site immediately after movement subsides.
- Avoid using automobiles as much as possible.
- Never attempt to watch a tsunami.

When in a building or an elevator:



- Push the buttons for each floor and get out of the elevator when it stops at the nearest floor.
- When the door will not open in the case of a power outage, etc., press the emergency contact button and wait for instructions.

● Flow of safety confirmation and evacuation



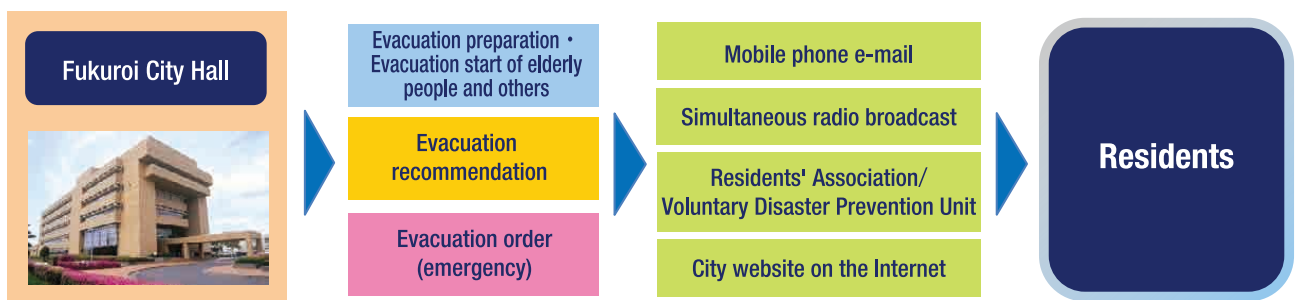
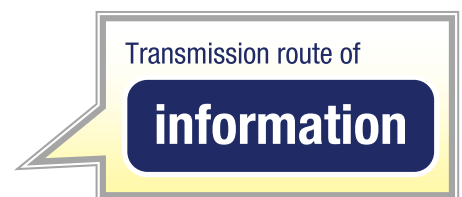
● Evacuation timing/actions to take during evacuation

In a disaster, an evacuation recommendation or an evacuation instruction, etc., may be issued. However, it is also important to evacuate early when you sense danger even if an evacuation recommendation has not been issued.

Type of information	Issuing guidelines		Announcement from city (example)	Actions to be taken by everyone	Danger
	Situation	Main information, etc.			
Evacuation preparation • Evacuation start of elderly people and others	A situation in which the danger of disaster occurrence is increased	<ul style="list-style-type: none"> ◇ Heavy rain/Flood/Windstorm warning ◇ Tsunami advisory ◇ Flood advisory information determined for each river ◇ Investigation information on the Tokai earthquake 	Due to ○○, damage may occur in △△ area. For those who require time to evacuate, start preparing for evacuation to □□.	Prepare for evacuation so that you are ready to evacuate at any time. Elderly people and children should evacuate as soon as possible.	Voluntary evacuation
Evacuation recommendation	A situation in which damage is expected to expand, taking refuge is recommended and evacuation is urged	<ul style="list-style-type: none"> ◇ Heavy rain/Flood/Windstorm warning ◇ Sediment disaster warning information ◇ Tsunami warning ◇ Flood hazard water level determined for each river ◇ Tokai earthquake advisory information 	Due to ○○, the danger of damage occurrence is increased in △△ area. People in △△ area must start evacuating to □□.	Start evacuating to an evacuation site quickly while helping each other.	Evacuate
Evacuation order (emergency)	A situation in which the danger of a disaster is approaching	<ul style="list-style-type: none"> ◇ Special warning for heavy rain/flood/windstorm, etc. ◇ Sediment disaster warning information ◇ Great tsunami warning ◇ Flood hazard information determined for each river 	Due to ○○, the danger of damage occurrence is increased in △△ area. People in △△ area must start evacuating to □□ immediately.	Evacuate to the designated evacuation site immediately. People in the target district must evacuate.	Evacuate immediately!!

Always pay attention to disaster information

Evacuation recommendations or evacuation instructions, etc., are conveyed through simultaneous radio broadcast, mobile phone e-mail such as Mellow Net, etc., by the following route.



When you receive the information, check the safety of your surroundings and evacuate calmly.

● Emergency survival kit/stocked supplies

Prepare the necessary items for your emergency survival kit in consideration of your family structure.

Make a "home emergency survival kit item list," perform inspections periodically, put items in an emergency survival bag, etc., and store it in a place where it can be accessed at any time. Utilize a stock method (rolling stock method) in which emergency food, etc., are consumed on a daily basis and the consumed items are purchased. Slippers, indoor shoes, etc., should always be left nearby to prevent injury from stepping on broken glass, etc., when starting evacuation.

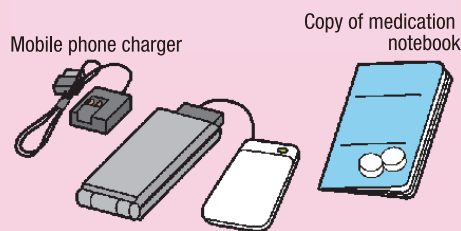
1) Emergency survival kit item checklist (example)



2) Stocked supply items checklist (example)

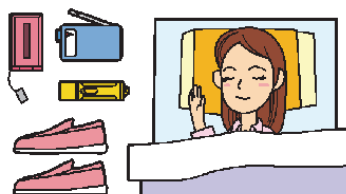


In the Great East Japan Earthquake, these items were helpful!



While you are asleep

Leave a flashlight, radio, mobile phone and shoes nearby. (You may be injured by broken glass if you are barefoot.)

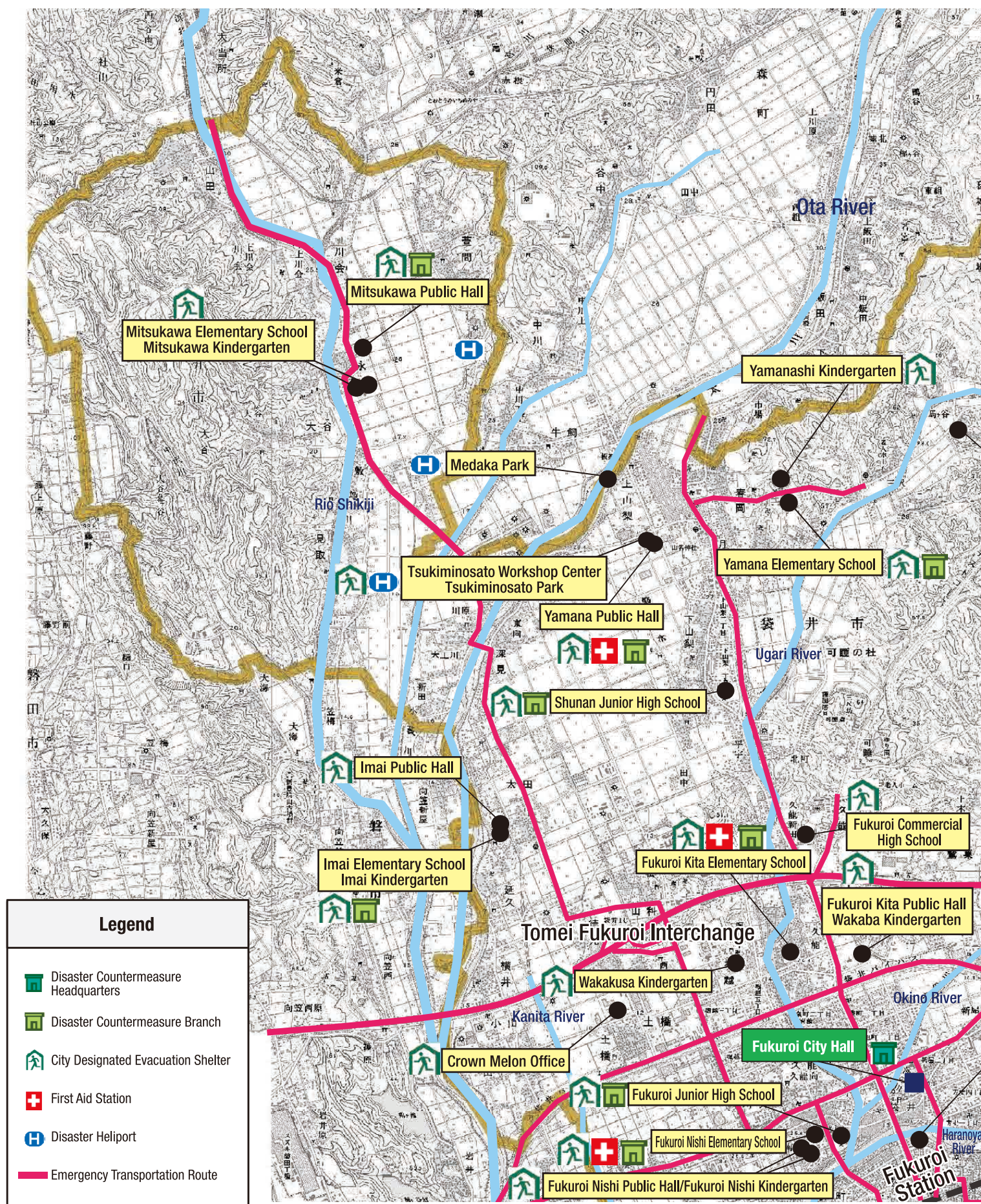


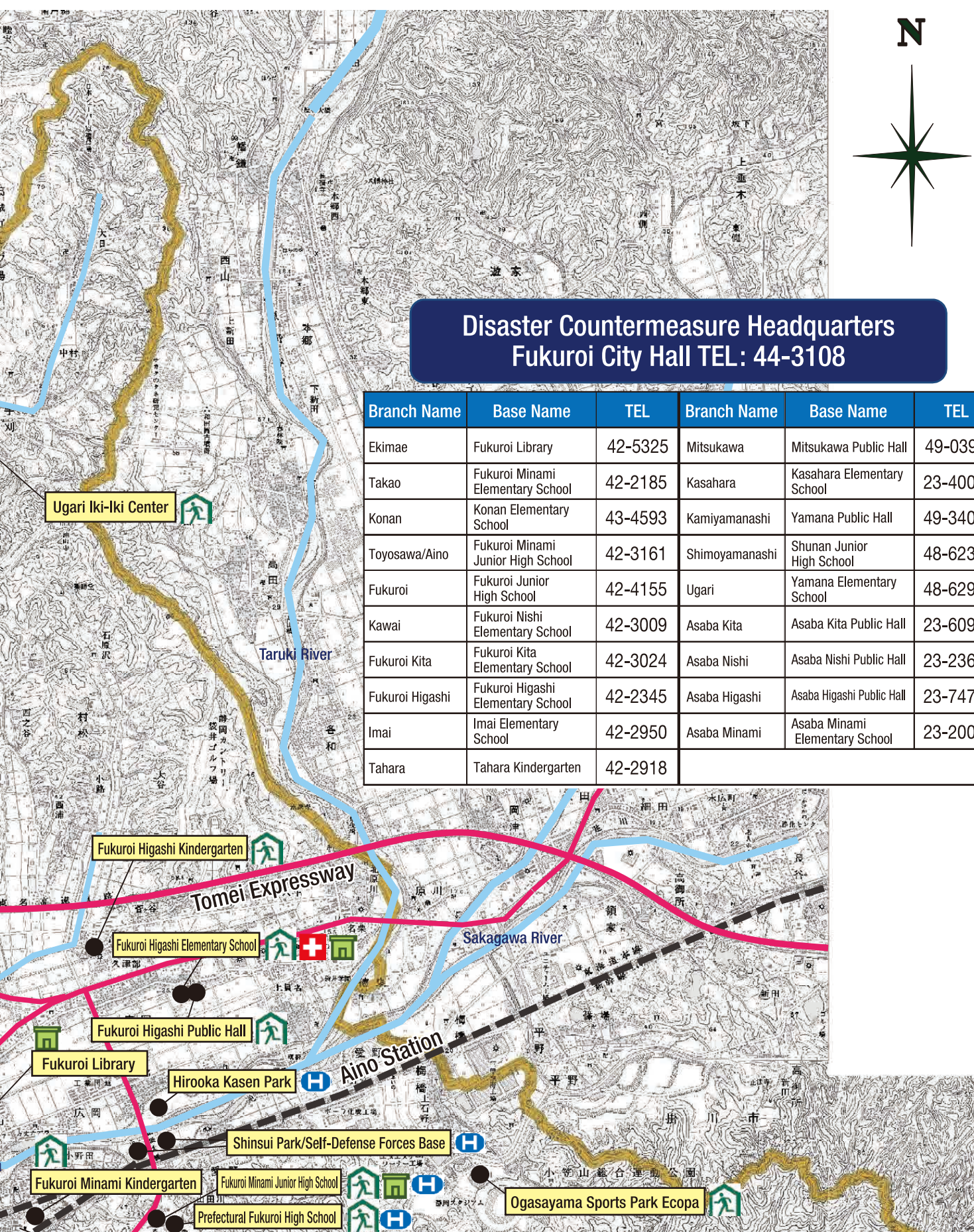
For households with babies

Add milk, baby bottle, baby food, spoon and snacks for babies, diapers, cleaning cotton, baby holder, bath towel or baby blanket and gauze or handkerchief



Disaster Prevention Map (Northern Area to Central Area)

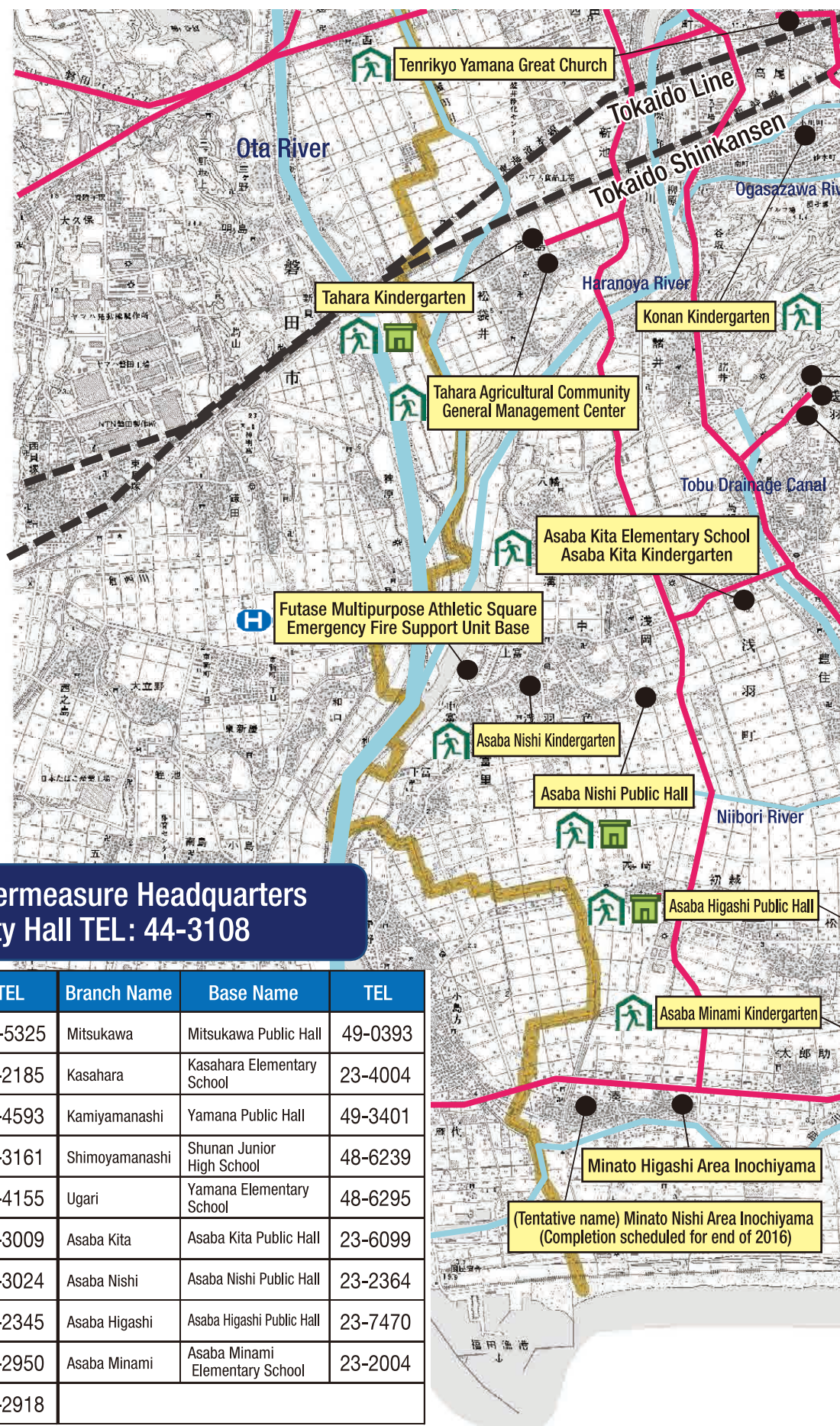




**Disaster Countermeasure Headquarters
Fukuroi City Hall TEL: 44-3108**

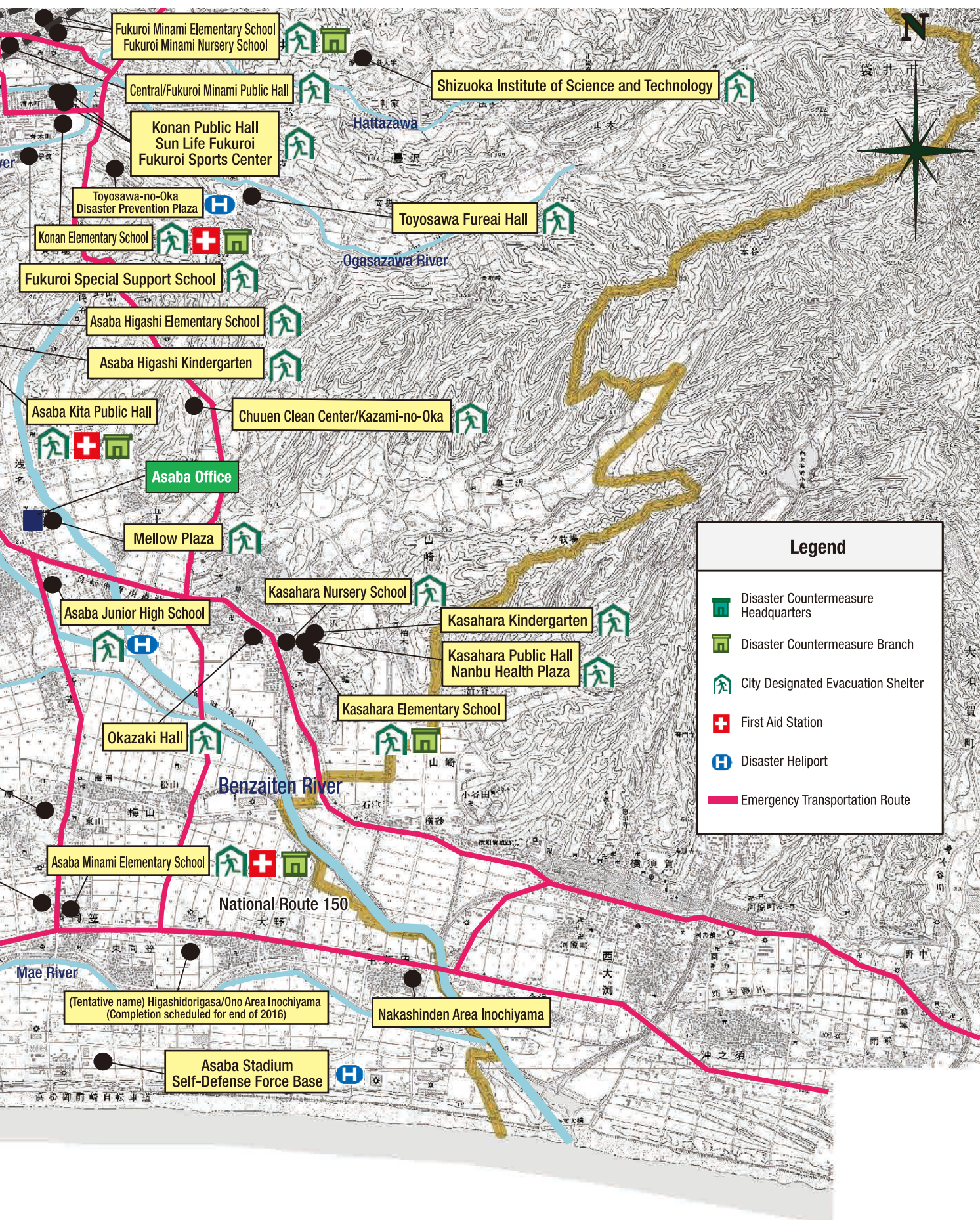
Branch Name	Base Name	TEL	Branch Name	Base Name	TEL
Ekimae	Fukuroi Library	42-5325	Mitsukawa	Mitsukawa Public Hall	49-0393
Takao	Fukuroi Minami Elementary School	42-2185	Kasahara	Kasahara Elementary School	23-4004
Konan	Konan Elementary School	43-4593	Kamiyamanashi	Yamana Public Hall	49-3401
Toyosawa/Aino	Fukuroi Minami Junior High School	42-3161	Shimoyamanashi	Shunan Junior High School	48-6239
Fukuroi	Fukuroi Junior High School	42-4155	Ugari	Yamana Elementary School	48-6295
Kawai	Fukuroi Nishi Elementary School	42-3009	Asaba Kita	Asaba Kita Public Hall	23-6099
Fukuroi Kita	Fukuroi Kita Elementary School	42-3024	Asaba Nishi	Asaba Nishi Public Hall	23-2364
Fukuroi Higashi	Fukuroi Higashi Elementary School	42-2345	Asaba Higashi	Asaba Higashi Public Hall	23-7470
Imai	Imai Elementary School	42-2950	Asaba Minami	Asaba Minami Elementary School	23-2004
Tahara	Tahara Kindergarten	42-2918			

Disaster Prevention Map (Central Area to Southern Area)



Disaster Countermeasure Headquarters
Fukuroi City Hall TEL: 44-3108

Branch Name	Base Name	TEL	Branch Name	Base Name	TEL
Ekimae	Fukuroi Library	42-5325	Mitsukawa	Mitsukawa Public Hall	49-0393
Takao	Fukuroi Minami Elementary School	42-2185	Kasahara	Kasahara Elementary School	23-4004
Konan	Konan Elementary School	43-4593	Kamiyamanashi	Yamana Public Hall	49-3401
Toyosawa/Aino	Fukuroi Minami Junior High School	42-3161	Shimoyamanashi	Shunan Junior High School	48-6239
Fukuroi	Fukuroi Junior High School	42-4155	Ugari	Yamana Elementary School	48-6295
Kawai	Fukuroi Nishi Elementary School	42-3009	Asaba Kita	Asaba Kita Public Hall	23-6099
Fukuroi Kita	Fukuroi Kita Elementary School	42-3024	Asaba Nishi	Asaba Nishi Public Hall	23-2364
Fukuroi Higashi	Fukuroi Higashi Elementary School	42-2345	Asaba Higashi	Asaba Higashi Public Hall	23-7470
Imai	Imai Elementary School	42-2950	Asaba Minami	Asaba Minami Elementary School	23-2004
Tahara	Tahara Kindergarten	42-2918			



● Fukuroi City Disaster Countermeasure Headquarters/Branch

Headquarters/ Branch name	Base (Address)	Telephone Number	Headquarters/ Branch name	Base (Address)	Telephone Number
Disaster Countermeasure Headquarters	Fukuroi City Hall (1-1-1 Araya)	44-3108	Tahara Branch	Tahara Kindergarten (190-1 Niike)	42-2918
Ekimae Branch	Fukuroi Library (19-1 Takao-cho)	42-5325	Mitsukawa Branch	Mitsukawa Public Hall (147 Tomonaga)	49-0393
Takao Branch	Fukuroi Minami Elementary School (740 Takao)	42-2185	Kasahara Branch	Kasahara Elementary School (4822 Yamazaki)	23-4004
Konan Branch	Konan Elementary School (306-2 Ueda-cho)	43-4593	Kamiyamanashi Branch	Yamana Public Hall (4-3-1 Kamiyamanashi)	49-3401
Toyosawa/ Aino Branch	Fukuroi Minami Junior High School (3110 Aino)	42-3161	Shimoyamanashi Branch	Shunan Junior High School (1-1-1 Shimoyamanashi)	48-6239
Fukuroi Branch	Fukuroi Junior High School (701 Kawai)	42-4155	Ugari Branch	Yamana Elementary School (684 Haruoka)	48-6295
Kawai Branch	Fukuroi Nishi Elementary School (442 Kawai)	42-3009	Asaba Kita Branch	Asaba Kita Public Hall (2857 Asaba)	23-6099
Fukuroi Kita Branch	Fukuroi Kita Elementary School (1580 Kuno)	42-3024	Asaba Nishi Branch	Asaba Nishi Public Hall (410-1 Naka)	23-2364
Fukuroi Higashi Branch	Fukuroi Higashi Elementary School (2317-1 Hirooka)	42-2345	Asaba Higashi Branch	Asaba Higashi Public Hall (63-1 Umeyama)	23-7470
Imai Branch	Imai Elementary School (692 Ota)	42-2950	Asaba Minami Branch	Asaba Minami Elementary School (148 Nishidori)	23-2004

● Fukuroi City Designated Evacuation Shelter/First Aid Station

Jurisdiction Branch	Shelter		Accommodation (people)	Branch	First Aid Station
	Name	Address/Telephone Number			
Ekimae/Takao	Central/Fukuroi Minami Public Hall	754-1 Takao 43-3386	359		
	Fukuroi Minami Elementary School (Takao Branch)	740 Takao 42-2185	1,073	●	
	Fukuroi Minami Kindergarten	3082-2 Aino 42-5074	145		
	Fukuroi Minami Nursery School	Takao 676-2 42-2547	98		
	Tenrikyo Yamana Great Church	7-1 Mikado-cho 42-4151	145		
Takaoka	Konan Elementary School (Konan Branch)	306-2 Ueda-cho 43-4593	872	●	●
	Konan Public Hall	267-8 Ueda-cho 42-4224	134		
	Fukuroi Sports Center	267-19 Ueda-cho 43-1790	218		
	Sun Life Fukuroi	267-5 Ueda-cho 43-5051	124		
	Konan Kindergarten	19-1 Ogawa-cho 43-2939	120		
	Prefectural Fukuroi Special Support School	2753-1 Takao 43-6611	1,009		
Toyosawa/Aino	Fukuroi Minami Junior High School (Hoai Branch)	3110 Aino 42-3161	1,187	●	
	Prefectural Fukuroi High School	2446-1 Aino 42-0191	734		
	Shizuoka Institute of Science and Technology	2200-2 Toyosawa 45-0111	486		
	Ogasayama Sports Park	2300-1 Aino 41-1800	4,227		
	Toyosawa Fureai Hall	210-1 Toyosawa 43-0900	94		
Fukuroi/Kawai/Fukuroi Nishi/Hojo/Tahara	Fukuroi Junior High School (Fukuroi Branch)	701 Kawai 42-4155	1,351	●	
	Fukuroi Nishi Public Hall	579-1 Kawai 43-3304	133		
	Fukuroi Nishi Elementary School (Kawai Branch)	442 Kawai 42-3009	796	●	●
	Fukuroi Nishi Kindergarten	568-1 Kawai 42-7647	136		
	Tahara Kindergarten	190-1 Niike 42-2918	78	●	
	Tahara Agricultural Community General Management Center	3078 Niike 44-6272	55		
Fukuroi Kita/Fukuroi Kita Yonmachi	Fukuroi Kita Elementary School (Fukuroi Branch)	1580 Kuno 42-3024	1,223	●	●
	Wakakusa Kindergarten	766-1 Horikoshi 42-2027	200		
	Fukuroi Kita Public Hall	1330-2 Kuno 43-3387	185		
	Wakaba Kindergarten	1310 Kuno 41-1717	174		
	Prefectural Fukuroi Commercial High School	2350 Kuno 42-2285	606		
Fukuroi Higashi 1/ Fukuroi Higashi 2	Fukuroi Higashi Elementary School (Fukuroi Higashi Branch)	2317-1 Hirooka 42-2345	708	●	●
	Fukuroi Higashi Kindergarten	2288 Kunimoto 42-4091	135		
	Fukuroi Higashi Public Hall	2506-1 Hirooka 43-3389	133		
Imai	Imai Elementary School (Imai Branch)	692 Ota 42-2950	628	●	
	Imai Public Hall	687 Ota 43-3388	158		
	Imai Kindergarten	723-1 Ota 42-2951	103		
	Shizuoka Prefecture Greenhouse Agricultural Cooperative Association Crown Melon Office	219 Oyama 42-4146	307		

Jurisdiction Branch	Shelter		Accommodation (people)	Branch	First Aid Station
	Name	Address/Telephone Number			
Mitsukawa	Mitsukawa Elementary School	38 Tomonaga 48-6197	493		
	Mitsukawa Kindergarten	113-1 Tomonaga 48-6429	93		
	Mitsukawa Public Hall (Mitsukawa Branch)	147 Tomonaga 49-0393	118	●	
Kasahara	Kasahara Elementary School (Kasahara Branch)	4822 Yamazaki 23-4004	564	●	
	Kasahara Kindergarten	5093-13 Yamazaki 23-4121	92		
	Kasahara Public Hall	5093-5 Yamazaki 23-2283	118		
	Community Disaster Prevention Center	5093-5 Yamazaki 42-7275	219		
	Kasahara Nursery School	567-1 Okazaki 23-3501	73		
	Okazaki Hall	2525 Okazaki 23-5129	84		
	Chuuken Clean Center (Sansara Igooka)	6635-192 Okazaki 30-0530	92		
Kamiyamanashi	Kazami-no-Oka	6635-8 Okazaki 24-0345	83		
Shimo yamanashi	Yamana Public Hall (Kamiyamanashi Branch)	4-3-1 Kamiyamanashi 49-3401	243	●	●
	Tsukiminosato Workshop Center	4-3-7 Kamiyamanashi 49-3400	1,120		
Ugari	Shunan Junior High School (Shimoyamanashi Branch)	1-1-1 Shimoyamanashi 48-6239	1,139	●	
	Yamana Elementary School (Ugari Branch)	684 Haruoka 48-6295	1,176	●	
	Yamanashi Kindergarten	1-8-7 Haruoka 48-6145	418		
Asaba Kita	Ugari Iki-Iki Center	1121-1 Ugari 49-3030	83		
	Asaba Kita Public Hall (Asaba Kita Branch)	2857 Asaba 23-6099	134	●	●
	Asaba Higashi Elementary School	2800 Asaba 23-6669	913		
	Asaba Higashi Kindergarten	2617-1 Asaba 23-3033	231		
	Asaba Kita Elementary School	1322 Asaba 23-3006	927		
	Asaba Kita Kindergarten	41 Asana 30-0800	190		
	Asaba Junior High School	822 Asana 23-3149	1,393		
	Mellow Plaza	1027 Asana 30-4555	627		
Asaba Nishi	Asaba Nishi Public Hall (Asaba Nishi Branch)	410-1 Naka 23-2364	137	●	
	Asaba Nishi Kindergarten	873-1 Nagamizo 23-3043	107		
Asaba Higashi	Asaba Higashi Public Hall (Asaba Higashi Branch)	63-1 Umeiyama 23-7470	117	●	
Asaba Minami	Asaba Minami Elementary School (Asaba Minami Branch)	148 Nishidori 23-2004	953	●	●
	Asaba Minami Kindergarten	1793 Matsubara 23-2009	165		
Total number of people accommodated (as of April 1, 2016)			30,236 people		